



ENERGIE. EINFACH. EFFIZIENT.

Von Top-Produkten bis hin zu persönlicher Beratung – für ein kluges Energiekonzept, das zu Ihnen passt.

Ganzheitliche Energiekonzepte GmbH & Co. KG
Überacher Str. 9/1
78052 Villingen-Schwenningen

+49 7705 9769690

info@ganzheitliche-energiekonzepte.de

www.ganz24.com

Alles im Blick

Produktinformationen

Technical Sheets 2022

THE WAY TO THE FUTURE_

HEAT PUMPS

ECOLOGICAL CHOICE

The Mitsui logo consists of a stylized red arch above the word "MITSUI" in a bold, black, sans-serif font.

MITSUI[®]



MHPP	NEW MONOBLOC	Inverter	R32	pag. 1
MHP	MONOBLOC	Inverter	R32	pag. 4
MHP	MONOBLOCCO TRIPHASE	Inverter	R32	pag. 6
SHP	SPLIT	Inverter	R32	pag. 8
SHP	SPLIT TRIPHASE	Inverter	R32	pag. 11
SHP	SPLIT WITH SANITARY TANK	Inverter	R32	pag. 12
SHP	SPLIT TRIPHASE WITH SANITARY TANK	Inverter	R32	pag. 14
DHW	DHW / WATER HEATER		R134A	pag. 15
BH	BACKUP ELECTRIC HEATER			pag. 18
MWW	FAN COIL	Design Wall Compact		pag. 19
MFW	FAN COIL	Design Floor Ceiling		pag. 20
MFW	FAN COIL	Design Pavimento Soffitto Compact		pag. 21

Products controllable via the dedicated
Comfort Home and Mega HP apps.



Comfort Home



Mega HP

Monobloc Line
Split Line

A+++

COMPACT LINE
NEW



Inverter



Refrigerant Gas



Wi-Fi
Included



Wired Controller
Included



			MHPP5RP24MI	MHPP7RP24MI	MHPP9RP24MI
Power supply		V/Ph/Hz	220-240/1/50	220-240/1/50	220-240/1/50
Heating ²	Capacity	kW	6.50	8.40	10.00
	Rated input	kW	1.22	1.66	2.12
	COP		5.30	5.05	4.70
Heating ³	Capacity	kW	6.30	8.20	9.40
	Rated input	kW	1.96	2.60	3.03
	COP		3.20	3.15	3.10
Cooling ⁴	Capacity	kW	6.50	8.30	10.00
	Rated input	kW	1.27	1.71	2.32
	EER		5.10	4.85	4.30
Cooling ⁵	Capacity	kW	5.50	7.40	9.00
	Rated input	kW	1.69	2.34	3.10
	EER		3.25	3.15	2.90
Seasonal space heating energy efficiency class ⁶	LWT a 35 °C		A+++	A+++	A+++
	LWT a 55 °C		A++	A++	A++
SCOP ⁶	LWT a 35 °C		5.12	5.17	5.12
	LWT a 55 °C		3.59	3.67	3.71
SEER ⁶	LWT a 7 °C		5.09	5.19	5.08
	LWT a 18 °C		7.81	8.09	8.31
Sound power level ⁷		dB(A)	60	63	65
Outdoor fan	Air flow	m ³ /h	3900	4500	4500
Net dimensions (WxHxD)		mm	1040x865x410	1040x865x410	1040x865x410
Packed dimensions (WxHxD)		mm	1190x970x560	1190x970x560	1190x970x560
Net/gross weight		kg	87/103	87/103	87/103
Water piping connections		inch	G1"BSP	G1"BSP	G1"BSP
Safety valve set pressure		MPa	0.3	0.3	0.3
Total water volume		L	5	5	5
Operating temperature range	Cooling	°C	-5~43	-5~43	-5~43
	Heating	°C	-25~35	-25~35	-25~35
	DHW	°C	-25~43	-25~43	-25~43
LWT range	Cooling	°C	5~30	5~30	5~30
	Heating	°C	12~65	12~65	12~65
	DHW	°C	10~60	10~60	10~60
Refrigerant	Type		R32 (675)	R32 (675)	R32 (675)
	Charged volume	kg	1.25	1.25	1.25
Expansion valve			Electronic	Electronic	Electronic
Backup electric heater	Optional	kW	3.00	3.00	3.00

1) Relevant Eu standards and legislation: EN14511: 2016; EN14825: 2016; EN50564: 2011; EN12102: 2017; [EU] N° 811/2013; [EU] N° 813/2013; OJ 2014/C 207/02; OJ 2017/C 229/01. 2) Outdoor air temperature 7°C DB, 85% R.H.; EWT 30°C, LWT 35°C. 3) Outdoor air temperature 7°C DB, 85% R.H.; EWT 47°C, LWT 55°C. 4) Outdoor air temperature 35°C DB; EWT 23°C, LWT 18°C. 5) Outdoor air temperature 35°C DB; EWT 12°C, LWT 7°C. 6) Seasonal space heating energy efficiency class tested in average climate conditions. 7) Sound power level tested in average climate conditions: a) Heating: outdoor air temperature 7°C DB, 6°C WB; EWT 30°C, LWT 35°C; b) Heating: outdoor air temperature 7°C DB, 6°C WB; EWT 47°C, LWT 55°C; c) Cooling: outdoor air temperature 35°C DB, 24°C WB; EWT 12°C, LWT 7°C.

A+++

COMPACT LINE
NEW



Inverter



Refrigerant Gas



Wi-Fi
Included



Wired Controller
Included



			MHPP12RP24MI	MHPP14RP24MI	MHPP16RP24MI
Power supply		V/Ph/Hz	220-240/1/50	220-240/1/50	220-240/1/50
Heating ²	Capacity	kW	12.20	14.10	16.00
	Rated input	kW	2.49	3.00	3.55
	COP		4.90	4.70	4.50
Heating ³	Capacity	kW	12.00	14.00	16.00
	Rated input	kW	4.00	4.74	5.61
	COP		3.00	2.95	2.85
Cooling ⁴	Capacity	kW	12.20	13.90	15.40
	Rated input	kW	2.65	3.15	3.66
	EER		4.60	4.40	4.20
Cooling ⁵	Capacity	kW	11.60	13.40	14.00
	Rated input	kW	3.74	4.57	4.82
	EER		3.10	2.93	2.90
Seasonal space heating energy efficiency class ⁶	LWT a 35 °C		A+++	A+++	A+++
	LWT a 55 °C		A++	A++	A++
SCOP ⁶	LWT a 35 °C		5.08	4.89	4.84
	LWT a 55 °C		3.61	3.62	3.59
SEER ⁶	LWT a 7 °C		5.07	5.09	5.11
	LWT a 18 °C		7.79	7.59	7.49
Sound power level ⁷		dB(A)	70	72	72
Outdoor fan	Air flow	m ³ /h	5200	5200	5200
Net dimensions (WxHxD)		mm	1040x865x410	1040x865x410	1040x865x410
Packed dimensions (WxHxD)		mm	1190x970x560	1190x970x560	1190x970x560
Net/gross weight		kg	106/122	106/122	106/122
Water piping connections		inch	1-1/4" BSP	1-1/4" BSP	1-1/4" BSP
Safety valve set pressure		MPa	0.3	0.3	0.3
Total water volume		L	5	5	5
Operating temperature range	Cooling	°C	-5~43	-5~43	-5~43
	Heating	°C	-25~35	-25~35	-25~35
	DHW	°C	-25~43	-25~43	-25~43
LWT range	Cooling	°C	5~30	5~30	5~30
	Heating	°C	12~65	12~65	12~65
	DHW	°C	10~60	10~60	10~60
Refrigerant	Type		R32 (675)	R32 (675)	R32 (675)
	Charged volume	kg	1.8	1.8	1.8
Expansion valve			Electronic	Electronic	Electronic
Backup electric heater	Optional	kW	3.00	3.00	3.00

1) Relevant Eu standards and legislation: EN14511: 2016; EN14825: 2016; EN50564: 2011; EN12102: 2017; [EU] N° 811/2013; [EU] N° 813/2013; OJ 2014/C 207/02; OJ 2017/C 229/01. 2) Outdoor air temperature 7°C DB, 85% R.H.; EWT 30°C, LWT 35°C. 3) Outdoor air temperature 7°C DB, 85% R.H.; EWT 47°C, LWT 55°C. 4) Outdoor air temperature 35°C DB; EWT 23°C, LWT 18°C. 5) Outdoor air temperature 35°C DB; EWT 12°C, LWT 7°C. 6) Seasonal space heating energy efficiency class tested in average climate conditions. 7) Sound power level tested in average climate conditions: a) Heating: outdoor air temperature 7°C DB, 6°C WB; EWT 30°C, LWT 35°C; b) Heating: outdoor air temperature 7°C DB, 6°C WB; EWT 47°C, LWT 55°C; c) Cooling: outdoor air temperature 35°C DB, 24°C WB; EWT 12°C, LWT 7°C.

A+++

COMPACT LINE
NEW



Inverter



Refrigerant Gas



Wi-Fi
Included



Wired Controller
Included



			MHPP12RP24P3MI	MHPP14RP24P3MI	MHPP16RP24P3MI
Power supply		V/Ph/Hz	380-415/3/50	380-415/3/50	380-415/3/50
Heating ²	Capacity	kW	12.20	14.10	16.00
	Rated input	kW	2.49	3.00	3.55
	COP		4.90	4.70	4.50
Heating ³	Capacity	kW	12.00	14.00	16.00
	Rated input	kW	4.00	4.74	5.61
	COP		3.00	2.95	2.85
Cooling ⁴	Capacity	kW	12.20	13.90	15.40
	Rated input	kW	2.65	3.15	3.66
	EER		4.60	4.40	4.20
Cooling ⁵	Capacity	kW	11.60	13.40	14.00
	Rated input	kW	3.74	4.57	4.82
	EER		3.10	2.93	2.90
Seasonal space heating energy efficiency class ⁶	LWT a 35 °C		A+++	A+++	A+++
	LWT a 55 °C		A++	A++	A++
SCOP ⁶	LWT a 35 °C		5.08	4.89	4.84
	LWT a 55 °C		3.61	3.62	3.59
SEER ⁶	LWT a 7 °C		5.11	5.12	5.14
	LWT a 18 °C		7.86	7.65	7.54
Sound power level ⁷		dB(A)	70	72	72
Outdoor fan	Air flow	m ³ /h	5200	5200	5200
Net dimensions (WxHxD)		mm	1040x865x410	1040x865x410	1040x865x410
Packed dimensions (WxHxD)		mm	1190x970x560	1190x970x560	1190x970x560
Net/gross weight		kg	120/136	120/136	120/136
Water piping connections		inch	1-1/4" BSP	1-1/4" BSP	1-1/4" BSP
Safety valve set pressure		MPa	0.3	0.3	0.3
Total water volume		L	5	5	5
Operating temperature range	Cooling	°C	-5~43	-5~43	-5~43
	Heating	°C	-25~35	-25~35	-25~35
	DHW	°C	-25~43	-25~43	-25~43
LWT range	Cooling	°C	5~30	5~30	5~30
	Heating	°C	12~65	12~65	12~65
	DHW	°C	10~60	10~60	10~60
Refrigerant	Type		R32 (675)	R32 (675)	R32 (675)
	Charged volume	kg	1.8	1.8	1.8
Expansion valve			Electronic	Electronic	Electronic
Backup electric heater	Optional	kW	3.00	3.00	3.00

1) Relevant Eu standards and legislation: EN14511: 2016; EN14825: 2016; EN50564: 2011; EN12102: 2017; [EU] N° 811/2013; [EU] N° 813/2013; OJ 2014/C 207/02; OJ 2017/C 229/01. 2) Outdoor air temperature 7°C DB, 85% R.H.; EWT 30°C, LWT 35°C. 3) Outdoor air temperature 7°C DB, 85% R.H.; EWT 47°C, LWT 55°C. 4) Outdoor air temperature 35°C DB; EWT 23°C, LWT 18°C. 5) Outdoor air temperature 35°C DB; EWT 12°C, LWT 7°C. 6) Seasonal space heating energy efficiency class tested in average climate conditions. 7) Sound power level tested in average climate conditions: a) Heating: outdoor air temperature 7°C DB, 6°C WB; EWT 30°C, LWT 35°C; b) Heating: outdoor air temperature 7°C DB, 6°C WB; EWT 47°C, LWT 55°C; c) Cooling: outdoor air temperature 35°C DB, 24°C WB; EWT 12°C, LWT 7°C.

A+++



Inverter



Refrigerant Gas



Wi-Fi
Included



Wired Controller
Included



			MHP5RP24MI	MHP7RP24MI	MHP9RP24MI
Power supply		V/Ph/Hz	220-240/1/50	220-240/1/50	220-240/1/50
Heating ²	Capacity	kW	4.65	6.65	8.60
	Rated input	kW	0.93	1.35	1.87
	COP		5.00	4.94	4.60
Heating ³	Capacity	kW	4.80	6.80	8.60
	Rated input	kW	1.33	2.42	3.13
	COP		3.60	2.81	2.75
Cooling ⁴	Capacity	kW	4.60	6.45	8.00
	Rated input	kW	0.95	1.39	1.92
	EER		4.82	4.65	4.16
Cooling ⁵	Capacity	kW	4.85	6.30	7.95
	Rated input	kW	1.63	2.27	3.15
	EER		2.98	2.77	2.53
Seasonal space heating energy efficiency class ⁶	LWT a 35 °C		A+++	A+++	A+++
	LWT a 55 °C		A++	A++	A++
SCOP ⁶	LWT a 35 °C		4.47	4.47	4.51
	LWT a 55 °C		3.24	3.24	3.22
SEER ⁶	LWT a 7 °C		4.71	4.99	4.92
	LWT a 18 °C		7.61	8.58	7.88
Sound power level ⁷		dB(A)	61	64	67
Outdoor fan	Air flow	m ³ /h	3050	3050	3050
Net dimensions (WxHxD)		mm	1210×945×402	1210×945×402	1210×945×402
Packed dimensions (WxHxD)		mm	1280×1090×435	1280×1090×435	1280×1090×435
Net/gross weight		kg	92/111	92/111	92/111
Water piping connections		inch	1" Male BSP	1" Male BSP	1" Male BSP
Safety valve set pressure		MPa	0.3	0.3	0.3
Total water volume		L	2.0	2.0	2.0
Operating temperature range	Cooling	°C	-5~43	-5~43	-5~43
	Heating	°C	-25~35	-25~35	-25~35
	DHW	°C	-25~43	-25~43	-25~43
LWT range	Cooling	°C	5~25	5~25	5~25
	Heating	°C	25~60	25~60	25~60
	DHW	°C	40~60	40~60	40~60
Refrigerant	Type		R32	R32	R32
	Charged volume	kg	2.0	2.0	2.0
Expansion valve			Electronic	Electronic	Electronic
Backup electric heater	Optional	kW	3.0	3.0	3.0

1) Relevant Eu standards and legislation: EN14511: 2016; EN14825: 2016; EN50564: 2011; EN12102: 2017; [EU] N° 811/2013; [EU] N° 813/2013; OJ 2014/C 207/02; OJ 2017/C 229/01. **2)** Outdoor air temperature 7°C DB, 85% R.H.; EWT 30°C, LWT 35°C. **3)** Outdoor air temperature 7°C DB, 85% R.H.; EWT 47°C, LWT 55°C. **4)** Outdoor air temperature 35°C DB; EWT 23°C, LWT 18°C. **5)** Outdoor air temperature 35°C DB; EWT 12°C, LWT 7°C. **6)** Seasonal space heating energy efficiency class tested in average climate conditions. **7)** Sound power level tested in average climate conditions: a) Heating: outdoor air temperature 7°C DB, 6°C WB; EWT 30°C, LWT 35°C; b) Heating: outdoor air temperature 7°C DB, 6°C WB; EWT 47°C, LWT 55°C; c) Cooling: outdoor air temperature 35°C DB, 24°C WB; EWT 12°C, LWT 7°C.

A++



Inverter



Refrigerant Gas



Wi-Fi
Included



Wired Controller
Included



			MHP12RP24MI	MHP14RP24MI	MHP16RP24MI
Power supply		V/Ph/Hz	220-240/1/50	220-240/1/50	220-240/1/50
Heating ²	Capacity	kW	12.30	14.10	16.30
	Rated input	kW	2.56	3.07	3.66
	COP		4.81	4.60	4.45
Heating ³	Capacity	kW	11.90	14.20	16.10
	Rated input	kW	4.28	5.17	5.91
	COP		2.78	2.75	2.73
Cooling ⁴	Capacity	kW	12.20	14.00	15.50
	Rated input	kW	2.55	3.10	3.64
	EER		4.78	4.52	4.26
Cooling ⁵	Capacity	kW	10.90	12.90	13.80
	Rated input	kW	3.74	4.64	5.21
	EER		2.92	2.78	2.65
Seasonal space heating energy efficiency class ⁶	LWT a 35 °C		A++	A++	A++
	LWT a 55 °C		A++	A++	A++
SCOP ⁶	LWT a 35 °C		4.29	4.27	4.30
	LWT a 55 °C		3.23	3.26	3.27
SEER ⁶	LWT a 7 °C		4.85	4.73	4.54
	LWT a 18 °C		7.50	7.16	6.78
Sound power level ⁷		dB(A)	68	71	71
Outdoor fan	Air flow	m ³ /h	6150	6150	6150
Net dimensions (WxHxD)		mm	1404×1414×405	1404×1414×405	1404×1414×405
Packed dimensions (WxHxD)		mm	1430×1475×450	1430×1475×450	1430×1475×450
Net/gross weight		kg	158/178	158/178	158/178
Water piping connections		inch	1-1/4" Male BSP	1-1/4" Male BSP	1-1/4" Male BSP
Safety valve set pressure		MPa	0.3	0.3	0.3
Total water volume		L	3.2	3.2	3.2
Operating temperature range	Cooling	°C	-5~46	-5~46	-5~46
	Heating	°C	-25~35	-25~35	-25~35
	DHW	°C	-25~43	-25~43	-25~43
LWT range	Cooling	°C	5~25	5~25	5~25
	Heating	°C	25~60	25~60	25~60
	DHW	°C	40~60	40~60	40~60
Refrigerant	Type		R32	R32	R32
	Charged volume	kg	2.8	2.8	2.8
Expansion valve			Electronic	Electronic	Electronic
Backup electric heater	Optional	kW	3.0	3.0	3.0

1) Relevant Eu standards and legislation: EN14511: 2016; EN14825: 2016; EN50564: 2011; EN12102: 2017; [EU] N° 811/2013; [EU] N° 813/2013; OJ 2014/C 207/02; OJ 2017/C 229/01. **2)** Outdoor air temperature 7°C DB, 85% R.H.; EWT 30°C, LWT 35°C. **3)** Outdoor air temperature 7°C DB, 85% R.H.; EWT 47°C, LWT 55°C. **4)** Outdoor air temperature 35°C DB; EWT 23°C, LWT 18°C. **5)** Outdoor air temperature 35°C DB; EWT 12°C, LWT 7°C. **6)** Seasonal space heating energy efficiency class tested in average climate conditions. **7)** Sound power level tested in average climate conditions: a) Heating: outdoor air temperature 7°C DB, 6°C WB; EWT 30°C, LWT 35°C; b) Heating: outdoor air temperature 7°C DB, 6°C WB; EWT 47°C, LWT 55°C; c) Cooling: outdoor air temperature 35°C DB, 24°C WB; EWT 12°C, LWT 7°C.

A++



Inverter



Refrigerant Gas



Wi-Fi
Included



Wired Controller
Included



			MHP12RP24P3MI	MHP14RP24P3MI	MHP16RP24P3MI
Power supply		V/Ph/Hz	380-415/3/50	380-415/3/50	380-415/3/50
Heating ²	Capacity	kW	12.30	14.10	16.30
	Rated input	kW	2.54	3.05	3.63
	COP		4.84	4.63	4.49
Heating ³	Capacity	kW	11.90	14.20	16.10
	Rated input	kW	4.24	5.10	5.83
	COP		2.81	2.79	2.76
Cooling ⁴	Capacity	kW	12.20	14.00	15.50
	Rated input	kW	2.53	3.11	3.63
	EER		4.83	4.50	4.27
Cooling ⁵	Capacity	kW	10.90	12.90	13.80
	Rated input	kW	3.72	4.62	5.19
	EER		2.93	2.80	2.66
Seasonal space heating energy efficiency class ⁶	LWT a 35 °C		A++	A++	A++
	LWT a 55 °C		A++	A++	A++
SCOP ⁶	LWT a 35 °C		4.29	4.27	4.30
	LWT a 55 °C		3.23	3.26	3.27
SEER ⁶	LWT a 7 °C		4.85	4.73	4.54
	LWT a 18 °C		7.50	7.16	6.78
Sound power level ⁷		dB(A)	68	71	71
Outdoor fan	Air flow	m ³ /h	6150	6150	6150
Net dimensions (WxHxD)		mm	1404×1414×405	1404×1414×405	1404×1414×405
Packed dimensions (WxHxD)		mm	1430×1475×450	1430×1475×450	1430×1475×450
Net/gross weight		kg	172/193	172/193	172/193
Water piping connections		inch	1-1/4" Male BSP	1-1/4" Male BSP	1-1/4" Male BSP
Safety valve set pressure		MPa	0.3	0.3	0.3
Total water volume		L	3.2	3.2	3.2
Operating temperature range	Cooling	°C	-5~46	-5~46	-5~46
	Heating	°C	-25~35	-25~35	-25~35
	DHW	°C	-25~43	-25~43	-25~43
LWT range	Cooling	°C	5~25	5~25	5~25
	Heating	°C	25~60	25~60	25~60
	DHW	°C	40~60	40~60	40~60
Refrigerant	Type		R32	R32	R32
	Charged volume	kg	2.8	2.8	2.8
Expansion valve			Electronic	Electronic	Electronic
Backup electric heater	Optional	kW	3.0	3.0	3.0

1) Relevant Eu standards and legislation: EN14511: 2016; EN14825: 2016; EN50564: 2011; EN12102: 2017; [EU] N° 811/2013; [EU] N° 813/2013; OJ 2014/C 207/02; OJ 2017/C 229/01. 2) Outdoor air temperature 7°C DB, 85% R.H.; EWT 30°C, LWT 35°C. 3) Outdoor air temperature 7°C DB, 85% R.H.; EWT 47°C, LWT 55°C. 4) Outdoor air temperature 35°C DB; EWT 23°C, LWT 18°C. 5) Outdoor air temperature 35°C DB; EWT 12°C, LWT 7°C. 6) Seasonal space heating energy efficiency class tested in average climate conditions. 7) Sound power level tested in average climate conditions: a) Heating: outdoor air temperature 7°C DB, 6°C WB; EWT 30°C, LWT 35°C; b) Heating: outdoor air temperature 7°C DB, 6°C WB; EWT 47°C, LWT 55°C; c) Cooling: outdoor air temperature 35°C DB, 24°C WB; EWT 12°C, LWT 7°C.



22 kW



30 kW



Inverter



Refrigerant Gas



Wi-Fi
Included



Wired Controller
Included



			MHPA22RP24P3MI	MHPA30RP24P3MI
Power supply		V/Ph/Hz	380-415/3/50	380-415/3/50
Heating ²	Capacity	kW	22.0	30.1
	Rated input	kW	5.0	7.70
	COP		4.40	3.91
Heating ³	Capacity	kW	22.0	30.0
	Rated input	kW	8.30	13.04
	COP		2.65	2.30
Cooling ⁴	Capacity	kW	23.0	31.0
	Rated input	kW	5.0	7.75
	EER		4.6	4.00
Cooling ⁵	Capacity	kW	21.0	29.5
	Rated input	kW	7.12	11.57
	EER		2.95	2.55
Seasonal space heating energy efficiency class ⁶	LWT a 35 °C		A+++	A++
	LWT a 55 °C		A++	A+
SCOP ⁶	LWT a 35 °C		4.53	4.19
	LWT a 55 °C		3.22	3.14
SEER ⁶	LWT a 7 °C		4.70	4.49
	LWT a 18 °C		5.67	5.71
Sound power level ⁷		dB(A)	73	77
Net dimensions (WxHxD)		mm	1129×1558×440	1129×1558×440
Packed dimensions (WxHxD)		mm	1220×1735×565	1220×1735×565
Net/gross weight		kg	177 / 206	177 / 206
Water piping connections		inch	1-1/4" BSP	1-1/4" BSP
Safety valve set pressure		MPa	0,3	0,3
Total water volume		m	12	12
Operating temperature range	Cooling	°C	-5 a 46	-5 a 46
	Heating	°C	-25 a 35	-25 a 35
	DHW	°C	-25 a 43	-25 a 43
LWT range	Cooling	°C	5 a 25	5 a 25
	Heating	°C	25 a 60	25 a 60
	DHW	°C	40 a 60	40 a 60
Refrigerant	Type		R32	R32
	Charged volume	kg	5.0	5.0
Expansion valve			Electronic	Electronic
Backup electric heater	Optional	kW	3.0	3.0

1) Relevant Eu standards and legislation: EN14511: 2016; EN14825: 2016; EN50564: 2011; EN12102: 2017; (EU) N° 811/2013; OJ 2014/C 207/02. 2) Outdoor air temperature 7°C DB, 85% R.H.; EWT 30°C, LWT 35°C. 3) Outdoor air temperature 7°C DB, 85% R.H.; EWT 47°C, LWT 55°C. 4) Outdoor air temperature 35°C DB; EWT 23°C, LWT 18°C. 5) Outdoor air temperature 35°C DB; EWT 12°C, LWT 7°C. 6) Seasonal space heating energy efficiency class tested in average climate conditions. 7) Test standard: EN12102-1

A+++



Inverter



Refrigerant Gas



Wi-Fi
Included



Wired Controller
Included



OUTDOOR UNIT			SHPA04RP24MI	SHPA06RP24MI
Power supply			V/Ph/Hz	220-240/1/50
Heating ²	Capacity	kW	4.25	6.20
	Rated input	kW	0.82	1.24
	COP		5.20	5.00
Heating ³	Capacity	kW	4.35	6.00
	Rated input	kW	1.14	2.00
	COP		3.80	3.00
Cooling ⁴	Capacity	kW	4.50	6.55
	Rated input	kW	0.81	1.34
	EER		5.55	4.90
Cooling ⁵	Capacity	kW	4.70	7.00
	Rated input	kW	1.36	2.33
	EER		3.45	3.00
Seasonal space heating energy class ⁵	LWT a 35 °C		A+++	A+++
	LWT a 55 °C		A++	A++
SCOP ⁶	LWT a 35 °C		4.85	4.95
	LWT a 55 °C		3.31	3.52
SEER ⁶	LWT a 7 °C		4.99	5.34
	LWT a 18 °C		7.77	8.21
Sound power level ⁷			dB(A)	56
Dimensions (WxHxD)			mm	1007x712x426
Net/gross weight			kg	58/64
FGAS piping connections	Liquid	Tipo/Dia.(OD)	mm	Flaring / ø 6.35
	Gas	Tipo/Dia.(OD)	mm	Flaring / ø 15.9
	Piping lenght (min - max)		m	2 a 30
	Installation height		Outdoor Unit (upside-downside)	m
Refrigerant	Type / Charged volume		kg	R32/1.50
Expansion valve				Electronic
Operating temperature range	Cooling		°C	-5 a 43
	Heating		°C	-25 a 35
	DHW		°C	-25 a 43
INDOOR UNIT			SHPAI60RP24MI	
Power supply			V/Ph/Hz	220-240/1/50
Sound power level ⁷			dB(A)	38
Dimensioni (LxHxP)			mm	420x790x270
Net/gross weight			kg	37/43
Water circuit	Piping connections		inch	1"
	Safety valve		MPa	0.3
	Drainage pipe diameter		mm	ø 25
	Expansion tank	Volume	L	8.0
	Water side heat exchanger	Type		Plate
	Water pump head		m	9.0
LWT range	Cooling		°C	5 a 25
	Heating		°C	25 a 65
	DHW		°C	40 a 60
Backup electric heater	Optional		kW	3.0

1) Relevant Eu standards and legislation: EN14511: 2018; EN14825: 2018; EN50564: 2011; EN12102: 2017; [EU] N° 811/2013; [EU] N° 813/2013; OJ 2014/C 207/02; OJ 2017/C 229/01. 2) Outdoor air temperature 7°C DB, 85% R.H.; EWT 30°C, LWT 35°C. 3) Outdoor air temperature 7°C DB, 85% R.H.; EWT 47°C, LWT 55°C. 4) Outdoor air temperature 35°C DB; EWT 23°C, LWT 18°C. 5) Outdoor air temperature 35°C DB; EWT 12°C, LWT 7°C. 6) Seasonal space heating energy efficiency class tested in average climate conditions. 7) Sound power level tested in heating conditions with outdoor air temperature 7°C DB, 6°C WB; EWT 30°C, LWT 35°C;



Inverter



Refrigerant Gas



Wi-Fi
Included



Wired Controller
Included



OUTDOOR UNIT			SHPA08RP24MI	SHPA10RP24MI
Power supply		V/Ph/Hz	220-240/1/50	220-240/1/50
Heating ²	Capacity	kW	8.30	10.0
	Rated input	kW	1.60	2.00
	COP		5.20	5.00
Heating ³	Capacity	kW	7.50	9.50
	Rated input	kW	2.36	3.06
	COP		3.18	3.10
Cooling ⁴	Capacity	kW	8.40	10.0
	Rated input	kW	1.66	2.08
	EER		5.05	4.80
Cooling ⁵	Capacity	kW	7.40	8.20
	Rated input	kW	2.19	2.48
	EER		3.38	3.30
Seasonal space heating energy class ⁵	LWT a 35 °C		A+++	A+++
	LWT a 55 °C		A++	A++
SCOP ⁶	LWT a 35 °C		5.21	5.19
	LWT a 55 °C		3.36	3.49
SEER ⁶	LWT a 7 °C		5.83	5.98
	LWT a 18 °C		8.95	8.78
Sound power level ⁷		dB(A)	59	60
Dimensions (WxHxD)		mm	1118x864x523	1118x864x523
Net/gross weight		kg	77/88	77/88
FGAS piping connections	Liquid	Tipo/Dia.(OD)	mm	Flaring / ø 9.52
	Gas	Tipo/Dia.(OD)	mm	Flaring / ø 15.9
	Piping lenght (min - max)		m	2 a 30
	Installation height		Outdoor Unit (upside-downside)	m
Refrigerant	Type / Charged volume		kg	R32/1.65
Expansion valve				Electronic
Operating temperature range	Cooling	°C	-5 a 43	-5 a 43
	Heating	°C	-25 a 35	-25 a 35
	DHW	°C	-25 a 43	-25 a 43
INDOOR UNIT			SHPAI100RP24MI	
Power supply		V/Ph/Hz	220-240/1/50	
Sound power level ⁷		dB(A)	42	
Dimensioni (LxHxP)		mm	420x790x270	
Net/gross weight		kg	37/43	
Water circuit	Piping connections		inch	1"
	Safety valve		MPa	0.3
	Drainage pipe diameter		mm	ø 25
	Expansion tank	Volume	L	8.0
	Water side heat exchanger	Type		Plate
	Water pump head		m	9.0
LWT range	Cooling	°C	5 a 25	
	Heating	°C	25 a 65	
	DHW	°C	40 a 60	
Backup electric heater	Optional	kW	3.0	

1) Relevant Eu standards and legislation: EN14511: 2018; EN14825: 2018; EN50564: 2011; EN12102: 2017; [EU] N° 811/2013; [EU] N° 813/2013; OJ 2014/C 207/02; OJ 2017/C 229/01. 2) Outdoor air temperature 7°C DB, 85% R.H.; EWT 30°C, LWT 35°C. 3) Outdoor air temperature 7°C DB, 85% R.H.; EWT 47°C, LWT 55°C. 4) Outdoor air temperature 35°C DB; EWT 23°C, LWT 18°C. 5) Outdoor air temperature 35°C DB; EWT 12°C, LWT 7°C. 6) Seasonal space heating energy efficiency class tested in average climate conditions. 7) Sound power level tested in heating conditions with outdoor air temperature 7°C DB, 6°C WB; EWT 30°C, LWT 35°C;

A+++



Inverter



Refrigerant Gas



Wi-Fi
Included



Wired Controller
Included



OUTDOOR UNIT			SHPA012RP24MI	SHPA014RP24MI	SHPA016RP24MI	
Power supply		V/Ph/Hz	220-240/1/50	220-240/1/50	220-240/1/50	
Heating ²	Capacity	kW	12.1	14.5	16.0	
	Rated input	kW	2.44	3.09	3.56	
	COP		4.95	4.70	4.50	
Heating ³	Capacity	kW	12.0	13.8	16.0	
	Rated input	kW	3.87	4.60	5.52	
	COP		3.10	3.00	2.90	
Cooling ⁴	Capacity	kW	12.0	13.50	14.20	
	Rated input	kW	3.00	3.74	3.94	
	EER		4.00	3.61	3.61	
Cooling ⁵	Capacity	kW	11.6	12.7	14.0	
	Rated input	kW	4.22	4.98	5.71	
	EER		2.75	2.55	2.45	
Seasonal space heating energy class ⁵	LWT a 35 °C		A+++	A+++	A+++	
	LWT a 55 °C		A++	A++	A++	
SCOP ⁶	LWT a 35 °C		4.81	4.72	4.62	
	LWT a 55 °C		3.45	3.47	3.41	
SEER ⁶	LWT a 7 °C		4.89	4.86	4.69	
	LWT a 18 °C		7.1	6.9	6.75	
Sound power level ⁷		dB(A)	64	65	68	
Dimensions (WxHxD)		mm	1118x864x523	1118x864x523	1118x864x523	
Net/gross weight		kg	96/110	96/110	96/110	
FGAS piping connections	Liquid	Tipo/Dia.(OD)	mm	Flaring / ø 9.52	Flaring / ø 9.52	Flaring / ø 9.52
	Gas	Tipo/Dia.(OD)	mm	Flaring / ø 15.9	Flaring / ø 15.9	Flaring / ø 15.9
	Piping lenght (min - max)		m	2 a 30	2 a 30	2 a 30
	Installation height	Outdoor Unit (upside-downside)	m	20/20	20/20	20/20
Refrigerant	Type / Charged volume	kg	R32/1.84	R32/1.84	R32/1.84	
Expansion valve			Electronic	Electronic	Electronic	
Operating temperature range	Cooling	°C	-5 a 43	-5 a 43	-5 a 43	
	Heating	°C	-25 a 35	-25 a 35	-25 a 35	
	DHW	°C	-25 a 43	-25 a 43	-25 a 43	
INDOOR UNIT			SHPA160RP24MI			
Power supply		V/Ph/Hz	220-240/1/50			
Sound power level ⁷		dB(A)	43			
Dimensioni (LxHxP)		mm	420x790x270			
Net/gross weight		kg	39/45			
Water circuit	Piping connections		inch	1"		
	Safety valve		MPa	0.3		
	Drainage pipe diameter		mm	ø 25		
	Expansion tank		Volume	L		
	Water side heat exchanger		Type	Plate		
	Water pump head		m	9.0		
LWT range	Cooling	°C	5 a 25			
	Heating	°C	25 a 65			
	DHW	°C	40 a 60			
Backup electric heater	Optional	kW	3.0			

1) Relevant Eu standards and legislation: EN14511: 2018; EN14825: 2018; EN50564: 2011; EN12102: 2017; [EU] N° 811/2013; [EU] N° 813/2013; OJ 2014/C 207/02; OJ 2017/C 229/01. **2)** Outdoor air temperature 7°C DB, 85% R.H.; EWT 30°C, LWT 35°C. **3)** Outdoor air temperature 7°C DB, 85% R.H.; EWT 47°C, LWT 55°C. **4)** Outdoor air temperature 35°C DB; EWT 23°C, LWT 18°C. **5)** Outdoor air temperature 35°C DB; EWT 12°C, LWT 7°C. **6)** Seasonal space heating energy efficiency class tested in average climate conditions. **7)** Sound power level tested in heating conditions with outdoor air temperature 7°C DB, 6°C WB; EWT 30°C, LWT 35°C;



Inverter



Refrigerant Gas



Wi-Fi
Included



Wired Controller
Included



OUTDOOR UNIT			SHPA012RP24P3MI	SHPA014RP24P3MI	SHPA016RP24P3MI	
Power supply		V/Ph/Hz	380-415/3/50	380-415/3/50	380-415/3/50	
Heating ²	Capacity	kW	12.1	14.5	16.0	
	Rated input	kW	2.44	3.09	3.56	
	COP		4.95	4.70	4.50	
Heating ³	Capacity	kW	12.0	13.8	16.0	
	Rated input	kW	3.87	4.60	5.52	
	COP		3.10	3.00	2.90	
Cooling ⁴	Capacity	kW	12.0	13.50	14.20	
	Rated input	kW	3.00	3.74	3.94	
	EER		4.00	3.61	3.61	
Cooling ⁵	Capacity	kW	11.6	12.7	14.0	
	Rated input	kW	4.22	4.98	5.71	
	EER		2.75	2.55	2.45	
Seasonal space heating energy class ⁶	LWT a 35 °C		A+++	A+++	A+++	
	LWT a 55 °C		A++	A++	A++	
SCOP ⁶	LWT a 35 °C		4.81	4.72	4.62	
	LWT a 55 °C		3.45	3.47	3.41	
SEER ⁶	LWT a 7 °C		4.86	4.83	4.67	
	LWT a 18 °C		7.04	6.85	6.71	
Sound power level ⁷		dB(A)	64	65	68	
Dimensions (WxHxD)		mm	1118x864x523	1118x864x523	1118x864x523	
Net/gross weight		kg	112/125	112/125	112/125	
FGAS piping connections	Liquid	Tipo/Dia.(OD)	mm	Flaring / ø 9.52	Flaring / ø 9.52	Flaring / ø 9.52
	Gas	Tipo/Dia.(OD)	mm	Flaring / ø 15.9	Flaring / ø 15.9	Flaring / ø 15.9
	Piping lenght (min - max)		m	2 a 30	2 a 30	2 a 30
	Installation height		Outdoor Unit (upside-downside)	m	20/20	20/20
Refrigerant		Type / Charged volume	kg	R32/1.84	R32/1.84	R32/1.84
Expansion valve				Electronic	Electronic	Electronic
Operating temperature range	Cooling	°C	-5 a 43	-5 a 43	-5 a 43	
	Heating	°C	-25 a 35	-25 a 35	-25 a 35	
	DHW	°C	-25 a 43	-25 a 43	-25 a 43	
INDOOR UNIT			SHPAI160RP24MI			
Power supply		V/Ph/Hz	220-240/1/50			
Sound power level ⁷		dB(A)	43			
Dimensioni (LxHxP)		mm	420x790x270			
Net/gross weight		kg	39/45			
Water circuit	Piping connections		inch	1"		
	Safety valve		MPa	0.3		
	Drainage pipe diameter		mm	ø 25		
	Expansion tank	Volume	L	8.0		
	Water side heat exchanger		Type	Plate		
	Water pump head		m	9.0		
LWT range	Cooling	°C	5 a 25			
	Heating	°C	25 a 65			
	DHW	°C	40 a 60			
Backup electric heater	Optional	kW	3.0			

1) Relevant Eu standards and legislation: EN14511: 2018; EN14825: 2018; EN50564: 2011; EN12102: 2017; [EU] N° 811/2013; [EU] N° 813/2013; OJ 2014/C 207/02; OJ 2017/C 229/01. 2) Outdoor air temperature 7°C DB, 85% R.H.; EWT 30°C, LWT 35°C. 3) Outdoor air temperature 7°C DB, 85% R.H.; EWT 47°C, LWT 55°C. 4) Outdoor air temperature 35°C DB; EWT 23°C, LWT 18°C. 5) Outdoor air temperature 35°C DB; EWT 12°C, LWT 7°C. 6) Seasonal space heating energy efficiency class tested in average climate conditions. 7) Sound power level tested in heating conditions with outdoor air temperature 7°C DB, 6°C WB; EWT 30°C, LWT 35°C;

A+++



Inverter



Refrigerant Gas



Wi-Fi
Included



Wired Controller
Included



OUTDOOR UNIT				SHPA06RP24MI	SHPA08RP24MI	SHPA10RP24MI
Power supply		V/Ph/Hz		220-240/1/50	220-240/1/50	220-240/1/50
Heating ²	Capacity	kW		6.20	8.30	10.0
	Rated input	kW		1.24	1.60	2.00
	COP			5.00	5.20	5.00
Heating ³	Capacity	kW		6.00	7.50	9.50
	Rated input	kW		2.00	2.36	3.06
	COP			3.00	3.18	3.10
Cooling ⁴	Capacity	kW		6.55	8.40	10.0
	Rated input	kW		1.34	1.66	2.08
	EER			4.90	5.05	4.80
Cooling ⁵	Capacity	kW		7.00	7.40	8.20
	Rated input	kW		2.33	2.19	2.48
	EER			3.00	3.38	3.30
Seasonal space heating energy class ⁵	LWT a 35 °C			A+++	A+++	A+++
	LWT a 55 °C			A++	A++	A++
SCOP ⁶	LWT a 35 °C			4.95	5.21	5.19
	LWT a 55 °C			3.52	3.36	3.49
SEER ⁶	LWT a 7 °C			5.34	5.83	5.98
	LWT a 18 °C			8.21	8.95	8.78
Sound power level ⁷		dB(A)		58	59	60
Dimensions (WxHxD)		mm		1007x712x426	1118x864x523	1118x864x523
Net/gross weight		kg		58/64	77/88	77/88
FGAS piping connections	Liquid	Tipo/Dia.(OD)	mm	Flaring / ø 6.35	Flaring / ø 9.52	Flaring / ø 9.52
	Gas	Tipo/Dia.(OD)	mm	Flaring / ø 15.9	Flaring / ø 15.9	Flaring / ø 15.9
	Piping lenght (min - max)		m	2 a 30	2 a 30	2 a 30
	Installation height	Outdoot Unit (upside-downside)	m	20/20	20/20	20/20
Refrigerant	Type / Charged volume	kg		R32/1.50	R32/1.65	R32/1.65
Expansion valve				Electronic	Electronic	Electronic
Operating temperature range	Cooling	°C		-5 a 43	-5 a 43	-5 a 43
	Heating	°C		-25 a 35	-25 a 35	-25 a 35
	DHW	°C		-25 a 43	-25 a 43	-25 a 43
INDOOR UNIT				ONYX25010		
Power supply		V/Ph/Hz		220-240/1/50		
Sound power level ⁷		dB(A)		40		
Dimensioni (LxHxP)		mm		700x1740x770 - 210		
Net/gross weight		kg		250		
Water circuit	Piping connections		inch	1"		
	Safety valve		MPa	0.3		
	Drainage pipe diameter		mm	ø 25		
	Expansion tank	Volume	L	8.0		
	Water side heat exchanger	Type		Plate		
	Water pump head		m	8.0		
	DHW expansion tank	Volume	L	16		
ErP Regulation	DHW profile			XL		
	Energy efficiency class		°C	A		
Backup electric heater	Optional	kW		2.0		

1) Relevant Eu standards and legislation: EN14511: 2018; EN14825: 2018; EN50564: 2011; EN12102: 2017; [EU] N° 811/2013; [EU] N° 813/2013; OJ 2014/C 207/02; OJ 2017/C 229/01. **2)** Outdoor air temperature 7°C DB, 85% R.H.; EWT 30°C, LWT 35°C. **3)** Outdoor air temperature 7°C DB, 85% R.H.; EWT 47°C, LWT 55°C. **4)** Outdoor air temperature 35°C DB; EWT 23°C, LWT 18°C. **5)** Outdoor air temperature 35°C DB; EWT 12°C, LWT 7°C. **6)** Seasonal space heating energy efficiency class tested in average climate conditions. **7)** Sound power level tested in heating conditions with outdoor air temperature 7°C DB, 6°C WB; EWT 30°C, LWT 35°C;

A+++



Inverter



Refrigerant Gas



Wi-Fi
Included



Wired Controller
Included



OUTDOOR UNIT				SHPA012RP24MI	SHPA014RP24MI	SHPA016RP24MI
Power supply		V/Ph/Hz		220-240/1/50	220-240/1/50	220-240/1/50
Heating ²	Capacity	kW		12.1	14.5	16.0
	Rated input	kW		2.44	3.09	3.56
	COP			4.95	4.70	4.50
Heating ³	Capacity	kW		12.0	13.8	16.0
	Rated input	kW		3.87	4.60	5.52
	COP			3.10	3.00	2.90
Cooling ⁴	Capacity	kW		12.0	13.50	14.20
	Rated input	kW		3.00	3.74	3.94
	EER			4.00	3.61	3.61
Cooling ⁵	Capacity	kW		11.6	12.7	14.0
	Rated input	kW		4.22	4.98	5.71
	EER			2.75	2.55	2.45
Seasonal space heating energy class ⁵	LWT a 35 °C			A+++	A+++	A+++
	LWT a 55 °C			A++	A++	A++
SCOP ⁶	LWT a 35 °C			4.81	4.72	4.62
	LWT a 55 °C			3.45	3.47	3.41
SEER ⁶	LWT a 7 °C			4.89	4.86	4.69
	LWT a 18 °C			7.1	6.9	6.75
Sound power level ⁷		dB(A)		64	65	68
Dimensions (WxHxD)		mm		1118x864x523	1118x864x523	1118x864x523
Net/gross weight		kg		96/110	96/110	96/110
FGAS piping connections	Liquid	Tipo/Dia.(OD)	mm	Flaring / ø 9.52	Flaring / ø 9.52	Flaring / ø 9.52
	Gas	Tipo/Dia.(OD)	mm	Flaring / ø 15.9	Flaring / ø 15.9	Flaring / ø 15.9
	Piping lenght (min - max)		m	2 a 30	2 a 30	2 a 30
	Installation height	Outdoot Unit (upside-downside)	m	20/20	20/20	20/20
Refrigerant	Type / Charged volume	kg		R32/1.84	R32/1.84	R32/1.84
Expansion valve				Electronic	Electronic	Electronic
Operating temperature range	Cooling	°C		-5 a 43	-5 a 43	-5 a 43
	Heating	°C		-25 a 35	-25 a 35	-25 a 35
	DHW	°C		-25 a 43	-25 a 43	-25 a 43
INDOOR UNIT				ONYX25016		
Power supply		V/Ph/Hz		220-240/1/50		
Sound power level ⁷		dB(A)		40		
Dimensioni (LxHxP)		mm		700x1740x770 - 210		
Net/gross weight		kg		250		
Water circuit	Piping connections		inch	1"		
	Safety valve		MPa	0.3		
	Drainage pipe diameter		mm	ø 25		
	Expansion tank		Volume	L		
	Water side heat exchanger		Type	Plate		
	Water pump head		m	8.0		
	DHW expansion tank		Volume	L		
ErP Regulation	DHW profile			XL		
	Energy efficiency class		°C	A		
Backup electric heater	Optional	kW		2.0		

1) Relevant Eu standards and legislation: EN14511: 2018; EN14825: 2018; EN50564: 2011; EN12102: 2017; [EU] N° 811/2013; [EU] N° 813/2013; OJ 2014/C 207/02; OJ 2017/C 229/01. 2) Outdoor air temperature 7°C DB, 85% R.H.; EWT 30°C, LWT 35°C. 3) Outdoor air temperature 7°C DB, 85% R.H.; EWT 47°C, LWT 55°C. 4) Outdoor air temperature 35°C DB; EWT 23°C, LWT 18°C. 5) Outdoor air temperature 35°C DB; EWT 12°C, LWT 7°C. 6) Seasonal space heating energy efficiency class tested in average climate conditions. 7) Sound power level tested in heating conditions with outdoor air temperature 7°C DB, 6°C WB; EWT 30°C, LWT 35°C;



Inverter



Refrigerant Gas



Wi-Fi
Included



Wired Controller
Included



OUTDOOR UNIT			SHPA012RP24P3MI	SHPA014RP24P3MI	SHPA016RP24P3MI	
Power supply		V/Ph/Hz	380-415/3/50	380-415/3/50	380-415/3/50	
Heating ²	Capacity	kW	12.1	14.5	16.0	
	Rated input	kW	2.44	3.09	3.56	
	COP		4.95	4.70	4.50	
Heating ³	Capacity	kW	12.0	13.8	16.0	
	Rated input	kW	3.87	4.60	5.52	
	COP		3.10	3.00	2.90	
Cooling ⁴	Capacity	kW	12.0	13.50	14.20	
	Rated input	kW	3.00	3.74	3.94	
	EER		4.00	3.61	3.61	
Cooling ⁵	Capacity	kW	11.6	12.7	14.0	
	Rated input	kW	4.22	4.98	5.71	
	EER		2.75	2.55	2.45	
Seasonal space heating energy class ⁵	LWT a 35 °C		A+++	A+++	A+++	
	LWT a 55 °C		A++	A++	A++	
SCOP ⁶	LWT a 35 °C		4.81	4.72	4.62	
	LWT a 55 °C		3.45	3.47	3.41	
SEER ⁶	LWT a 7 °C		4.86	4.83	4.67	
	LWT a 18 °C		7.04	6.85	6.71	
Sound power level ⁷		dB(A)	64	65	68	
Dimensions (WxHxD)		mm	1118x864x523	1118x864x523	1118x864x523	
Net/gross weight		kg	112/125	112/125	112/125	
FGAS piping connections	Liquid	Tipo/Dia.(OD)	mm	Flaring / ø 9.52	Flaring / ø 9.52	Flaring / ø 9.52
	Gas	Tipo/Dia.(OD)	mm	Flaring / ø 15.9	Flaring / ø 15.9	Flaring / ø 15.9
	Piping lenght (min - max)		m	2 a 30	2 a 30	2 a 30
	Installation height	Outdoot Unit (upside-downside)	m	20/20	20/20	20/20
Refrigerant	Type / Charged volume	kg	R32/1.84	R32/1.84	R32/1.84	
Expansion valve			Electronic	Electronic	Electronic	
Operating temperature range	Cooling	°C	-5 a 43	-5 a 43	-5 a 43	
	Heating	°C	-25 a 35	-25 a 35	-25 a 35	
	DHW	°C	-25 a 43	-25 a 43	-25 a 43	
INDOOR UNIT			ONYX25016			
Power supply		V/Ph/Hz	220-240/1/50			
Sound power level ⁷		dB(A)	40			
Dimensioni (LxHxP)		mm	700x1740x770 - 210			
Net/gross weight		kg	250			
Water circuit	Piping connections		inch	1"		
	Safety valve		MPa	0.3		
	Drainage pipe diameter		mm	ø 25		
	Expansion tank	Volume	L	8.0		
	Water side heat exchanger	Type		Plate		
	Water pump head		m	8.0		
	DHW expansion tank	Volume	L	16		
ErP Regulation	DHW profile		XL			
	Energy efficiency class		A			
Backup electric heater	Optional	kW	2.0			

1) Relevant Eu standards and legislation: EN14511: 2018; EN14825: 2018; EN50564: 2011; EN12102: 2017; [EU] N° 811/2013; [EU] N° 813/2013; OJ 2014/C 207/02; OJ 2017/C 229/01. **2)** Outdoor air temperature 7°C DB, 85% R.H.; EWT 30°C, LWT 35°C. **3)** Outdoor air temperature 7°C DB, 85% R.H.; EWT 47°C, LWT 55°C. **4)** Outdoor air temperature 35°C DB; EWT 23°C, LWT 18°C. **5)** Outdoor air temperature 35°C DB; EWT 12°C, LWT 7°C. **6)** Seasonal space heating energy efficiency class tested in average climate conditions. **7)** Sound power level tested in heating conditions with outdoor air temperature 7°C DB, 6°C WB; EWT 30°C, LWT 35°C;



Wi-Fi
Included



Refrigerant
Gas



			DHWHP80MI	DHWHP100MI
Power supply		V/Ph/Hz	220-240/1/50	220-240/1/50
Heating ¹	Capacity	kW	0.85	0.85
	Rated input	kW	0.25	0.25
	COP		2.62	2.62
Energy efficiency class ²			A+	A+
Water heating energy efficiency ²			111.2 %	111.2 %
Tapping profile ²			M	M
Yearly consumption ²		kWh/year	388	430
Heating up time ²		h	4,9	6,2
Rated current ²		A	1.16	1.16
DHW maximum temperature (without electric heater)		°C	60	60
Sound power level		dB(A)	46	48.5
Net dimensions (ØxH)		mm	Ø520x1160	Ø520x1368
Packed dimensions (WxHxD)		mm	572x1185x572	580x1412x580
Net weight		kg	50	58
Tank capacity		l	80	110
Tank material			Steel	Steel
Maximum operating water pressure		MPa	1.0	1.0
Compressor	Type		Rotary	Rotary
	Type		R134a	R134a
Refrigerant	Charge	kg	0.65	0.65
	GWP		1430	1430
Expansion valve			Electronic	Electronic
Fan			Centrifugal	Centrifugal
Air flow		m ³ /h	300	300
Temperature range (operating only in heat pumps)		°C	-5 a 43	-5 a 43
LWT range		°C	40 a 60	40 a 60
Back-up electric heater		kW	1.5	1.5
Auxiliary exchanger area		m ²	-	-

1. Room temperature 7°C DB, 6°C WB, water temperature from 10°C to 55°C;
2. Energy efficiency in Heating on standard ERP in average conditions;

A



Wi-Fi
Included



Refrigerant
Gas



			DHWHP200MI	DHWHP200SMI
Power supply		V/Ph/Hz	220-240/1/50	220-240/1/50
Heating ¹	Capacity	kW	1.65	1.65
	Rated input	kW	0.455	0.455
	COP		2.61	2.61
Energy efficiency class ²			A	A
Water heating energy efficiency ²			106 %	106 %
Tapping profile ²			L	L
Yearly consumption ²		kWh/year	901	901
Heating up time ²		h	6.3	6.3
Rated current ²		A	2.05	2.05
DHW maximum temperature (without electric heater)		°C	60	60
Sound power level		dB(A)	58	58
Net dimensions (ØxH)		mm	Ø560x1744	Ø560x1744
Packed dimensions (WxHxD)		mm	580x1875x630	580x1875x630
Net weight		kg	90	90
Tank capacity		l	200	190
Tank material			Steel Duplex	Steel Duplex
Maximum operating water pressure		MPa	1.0	1.0
Compressor	Type		Rotary	Rotary
	Type		R134a	R134a
Refrigerant	Charge	kg	1.00	1.00
	GWP		1430	1430
Expansion valve			Electronic	Electronic
Fan			Centrifugal	Centrifugal
Air flow		m ³ /h	450	450
Temperature range (operating only in heat pumps)		°C	-5 a 43	-5 a 43
LWT range		°C	40 a 60	40 a 60
Backup electric heater		kW	1.5	1.5
Auxiliary exchanger area		m ²	-	0.7
Auxiliary exchanger material				AISI 316

1. Room temperature 7°C DB, 6°C WB, water temperature from 10°C to 55°C;
2. Energy efficiency in Heating on standard ERP in average conditions;



Wi-Fi
Included



Refrigerant
Gas



			DHWHP300MI	DHWHP300SMI
Power supply		V/Ph/Hz	220-240/1/50	220-240/1/50
Heating ¹	Capacity	kW	1.65	1.65
	Rated input	kW	0.450	0.450
	COP		2.65	2.65
Energy efficiency class ²			A	A
Water heating energy efficiency ²			108.2 %	108.2 %
Tapping profile ²			XL	XL
Yearly consumption ²		kWh/year	1514	1514
Heating up time ²		h	9.5	9.5
Rated current ²		A	2.01	2.01
DHW maximum temperature (without electric heater)		°C	60	60
Sound power level		dB(A)	58	58
Net dimensions (ØxH)		mm	Ø600x2040	Ø600x2040
Packed dimensions (WxHxD)		mm	650x2160x650	650x650x2160
Net weight		kg	100	100
Tank capacity		l	300	290
Tank material			Steel Duplex	Steel Duplex
Maximum operating water pressure		MPa	1.0	1.0
Compressor	Type		Rotary	Rotary
	Type		R134a	R134a
Refrigerant	Charge	kg	1.00	1.00
	GWP		1430	1430
Expansion valve			Electronic	Electronic
Fan			Centrifugal	Centrifugal
Air flow		m ³ /h	450	450
Temperature range (operating only in heat pumps)		°C	-5 a 43	-5 a 43
LWT range		°C	40 a 60	40 a 60
Backup electric heater		kW	1.5	1.5
Auxiliary exchanger area		m ²	-	0.7
Auxiliary exchanger material				AISI 316

1. Room temperature 7°C DB, 6°C WB, water temperature from 10°C to 55°C;
2. Energy efficiency in Heating on standard ERP in average conditions;

BACKUP ELECTRIC HEATER

additional for Monoblock 3 kW



BH30A		
Power supply	V/Ph/Hz	220-240/1/50
Capacity	kW	3.0
Rated current	A	13
Dimensions (HxDxW)	mm	780x220x280
Packed dimensions (HxDxW)	mm	890x325x385
Net/gross weight	kg	18.5/24
Operation range	°C	5 a 35
In/Out water piping diameter	inch	G1

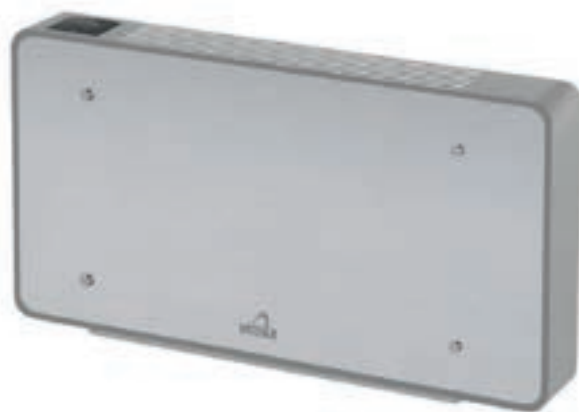


MWWX400Z			
Power supply		V/Ph/Hz	220-240/1/50
Cooling ¹	Capacity (H/M/L)	kW	1.20/0.81/0.70
	Rated input (H/M/L)	W	11/6/4
Heating ²	Capacity (H/M/L)	kW	1.68/1.14/0.96
	Rated input (H/M/L)	W	11/6/4
Air flow (H/M/L)		m ³ /h	315/230/155
Motor fan type			DC Motor
Fan type			Tangential
Sound pressure level (H/M/L)		dB(A)	37.1/28.0/23.0
Net dimensions (WxHxD)		mm	873x383x120
Net weight		kg	16
In/Out water pipe connection		inch	G1/2

MWWX600Z			
Power supply		V/Ph/Hz	220-240/1/50
Cooling ¹	Capacity (H/M/L)	kW	1.70/1.20/0.90
	Rated input (H/M/L)	W	14/7/5
Heating ²	Capacity (H/M/L)	kW	2.45/1.90/1.53
	Rated input (H/M/L)	W	14/7/5
Air flow (H/M/L)		m ³ /h	450/350/240
Motor fan type			DC Motor
Fan type			Tangential
Sound pressure level (H/M/L)		dB(A)	38.3/29.8/23.4
Net dimensions (WxHxD)		mm	1065x383x120
Net weight		kg	17
In/Out water pipe connection		inch	G1/2

NMWWX800Z			
Power supply		V/Ph/Hz	220-240/1/50
Cooling ¹	Capacity (H/M/L)	kW	2.45/1.60/1.18
	Rated input (H/M/L)	W	17/10/8
Heating ²	Capacity (H/M/L)	kW	3.30/2.20/1.70
	Rated input (H/M/L)	W	17/10/8
Air flow (H/M/L)		m ³ /h	540/450/310
Motor fan type			DC Motor
Fan type			Tangential
Sound pressure level (H/M/L)		dB(A)	39.1/32.2/25.0
Net dimensions (WxHxD)		mm	1257x383x120
Net weight		kg	20
In/Out water pipe connection		inch	G1/2

1. Room temperature 27°C DB, 19°C WB, water temperature from 7°C a 12°C;
2. Room temperature 20°C DB, water temperature from 40°C a 45°C;



MFWX400Z			
Power supply		V/Ph/Hz	220-240/1/50
Cooling ¹	Capacity (H/M/L)	kW	1.81/1.45/0.98
	Rated input (H/M/L)	W	13/6/4
Heating ²	Capacity (H/M/L)	kW	2.40/1.50/1.16
	Rated input (H/M/L)	W	13/6/4
Air flow (H/M/L)		m ³ /h	315/230/155
Motor fan type			DC Motor
Fan type			Tangential
Sound pressure level (H/M/L)		dB(A)	34.3/27.6/20.5
Net dimensions (WxHxD)		mm	873x553x120
Net weight		kg	21
In/Out water pipe connection		inch	G1/2

MFWX600Z			
Power supply		V/Ph/Hz	220-240/1/50
Cooling ¹	Capacity (H/M/L)	kW	2.70/2.20/1.70
	Rated input (H/M/L)	W	14/7/5
Heating ²	Capacity (H/M/L)	kW	3.20/2.40/1.75
	Rated input (H/M/L)	W	14/7/5
Air flow (H/M/L)		m ³ /h	450/350/240
Motor fan type			DC Motor
Fan type			Tangential
Sound pressure level (H/M/L)		dB(A)	35.2/28.5/21.6
Net dimensions (WxHxD)		mm	1065x553x120
Net weight		kg	24
In/Out water pipe connection		inch	G1/2

MFWX800Z			
Power supply		V/Ph/Hz	220-240/1/50
Cooling ¹	Capacity (H/M/L)	kW	3.38/2.75/2.13
	Rated input (H/M/L)	W	17/10/8
Heating ²	Capacity (H/M/L)	kW	4.23/3.40/2.41
	Rated input (H/M/L)	W	17/10/8
Air flow (H/M/L)		m ³ /h	540/450/310
Motor fan type			DC Motor
Fan type			Tangential
Sound pressure level (H/M/L)		dB(A)	35.4/29.6/23.5
Net dimensions (WxHxD)		mm	1257x553x120
Net weight		kg	27
In/Out water pipe connection		inch	G1/2

1. Room temperature 27°C DB, 19°C WB, water temperature from 7°C a 12°C;
 2. Room temperature 20°C DB, water temperature from 40°C a 45°C;



MFWX400SZ			
Power supply		V/Ph/Hz	220-240/1/50
Cooling ¹	Capacity (H/M/L)	kW	1.20/0.81/0.70
	Rated input (H/M/L)	W	11/6/4
Heating ²	Capacity (H/M/L)	kW	1.68/1.14/0.96
	Rated input (H/M/L)	W	11/6/4
Air flow (H/M/L)		m ³ /h	315/230/155
Motor fan type			DC Motor
Fan type			Tangential
Sound pressure level (H/M/L)		dB(A)	37.1/28.0/23.0
Net dimensions (WxHxD)		mm	879x383x120
Net weight		kg	16
In/Out water pipe connection		inch	G1/2

MFWX600SZ			
Power supply		V/Ph/Hz	220-240/1/50
Cooling ¹	Capacity (H/M/L)	kW	1.70/1.20/0.90
	Rated input (H/M/L)	W	14/7/5
Heating ²	Capacity (H/M/L)	kW	2.45/1.90/1.53
	Rated input (H/M/L)	W	14/7/5
Air flow (H/M/L)		m ³ /h	450/350/240
Motor fan type			DC Motor
Fan type			Tangential
Sound pressure level (H/M/L)		dB(A)	38.3/29.8/23.4
Net dimensions (WxHxD)		mm	1065x383x120
Net weight		kg	17
In/Out water pipe connection		inch	G1/2

MFWX800SZ			
Power supply		V/Ph/Hz	220-240/1/50
Cooling ¹	Capacity (H/M/L)	kW	2.45/1.60/1.18
	Rated input (H/M/L)	W	17/10/8
Heating ²	Capacity (H/M/L)	kW	3.30/2.20/1.70
	Rated input (H/M/L)	W	17/10/8
Air flow (H/M/L)		m ³ /h	540/450/310
Motor fan type			DC Motor
Fan type			Tangential
Sound pressure level (H/M/L)		dB(A)	39.1/32.2/25.0
Net dimensions (WxHxD)		mm	1257x383x120
Net weight		kg	20
In/Out water pipe connection		inch	G1/2

1. Room temperature 27°C DB, 19°C WB, water temperature from 7°C a 12°C;
 2. Room temperature 20°C DB, water temperature from 40°C a 45°C;



The company reserves the right to make any changes necessary to improve features at any time, without prior notice, of data and images of products and accessories. For graphical reasons, the colours of the products depicted may differ from reality.



AMG S.p.A.

Via Delle Arti e dei Mestieri, 1/3
36030 S. Vito di Leguzzano (VI) Italia

Tel. +39 0445 519933

Fax +39 0445 519037

P.I. e C.F. 02488430246

www.amg-spa.com

info@amg-spa.com

www.mitsuiairconditioner.com